



Orchard Drive, Epping, CM16

BUTLER & STAG



**Guide Price £800,000 -  
£825,000**

**Situated in the heart of  
Theydon Bois is this  
stunning spacious two  
bedroom detached  
bungalow.**



## Freehold

- Detached Family Bungalow
- Spacious Lounge
- Potential To Extend (stp)
- Spanning Over 1700 sq ft
- Two Bedrooms/One Bathroom
- Off Street Parking/Garage
- Chain Free

Accommodation consists of a large formal living room, a separate kitchen, two bedrooms and a family bathroom. The loft offers ample space which can be converted (stpp).

Externally, the property boasts off street parking via the driveway, side access and a mature north-east facing garden, with garage.

Orchard Drive is a much sought after turning in the ever popular village of Theydon Bois. The village is arranged around the green and offers a parade of shops, pubs and restaurants and offers easy access into Epping Forest, with its deer sanctuary. Transport links into London are excellent. Theydon Bois underground station is in walking distance and there are several well regarded state and private schools within easy reach. Local leisure facilities include golf courses, sports centres and a tennis club.



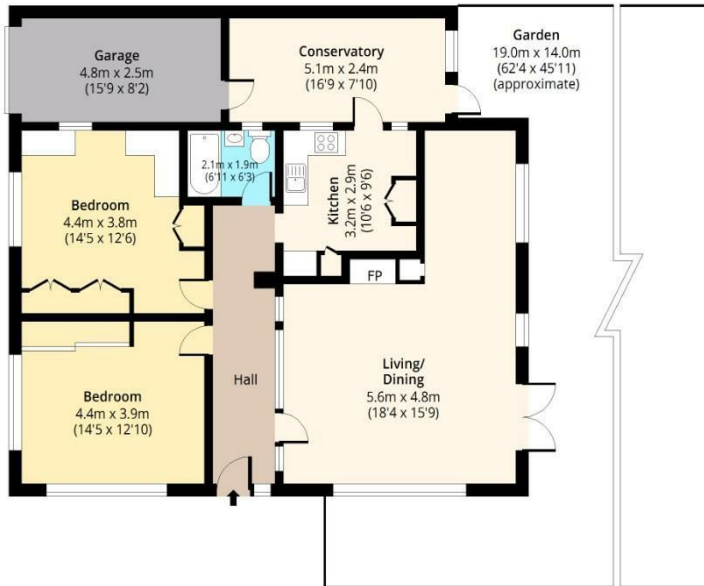


## Orchard Drive, CM16



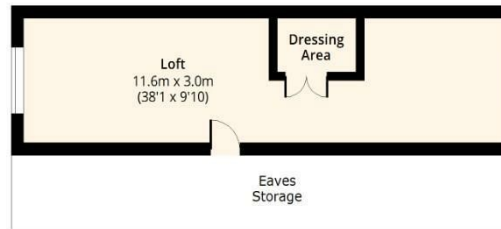
### Ground Floor

Approx. 128.69 Sq. meters (1385 Sq. feet)



### Loft

Approx. 34.80 Sq. meters (375 Sq. feet)



Total area: approx. 163.49 Sq. meters (1760 Sq. feet)  
For illustration purposes only - not to scale  
[www.lpaplus.com](http://www.lpaplus.com)



# BUTLER & STAG

☎ 01992 667666

🏠 4 Forest Drive, Theydon Bois, Essex, CM16 7EY

✉ [theydon@butlerandstag.com](mailto:theydon@butlerandstag.com)

IMPORTANT NOTICE - These particulars have been prepared in good faith and they are not intended to constitute part of an offer or contract. We have not performed a structural survey on this property and the services, appliances and specific fittings have not been tested. All photographs, measurements, floor plans and distances referred to are given as a guide and should not be relied upon.

[www.butlerandstag.uk](http://www.butlerandstag.uk)